

Jo-Ann Stores MI-Roseville

20550 E. 13 Mile Road | Roseville, MI 48066



Highlights

Type: Freestanding Retail
Total SF: 32,863
Parking Spaces: 211
Year Built: 1996
Year Renovated: 2013

Property Highlights

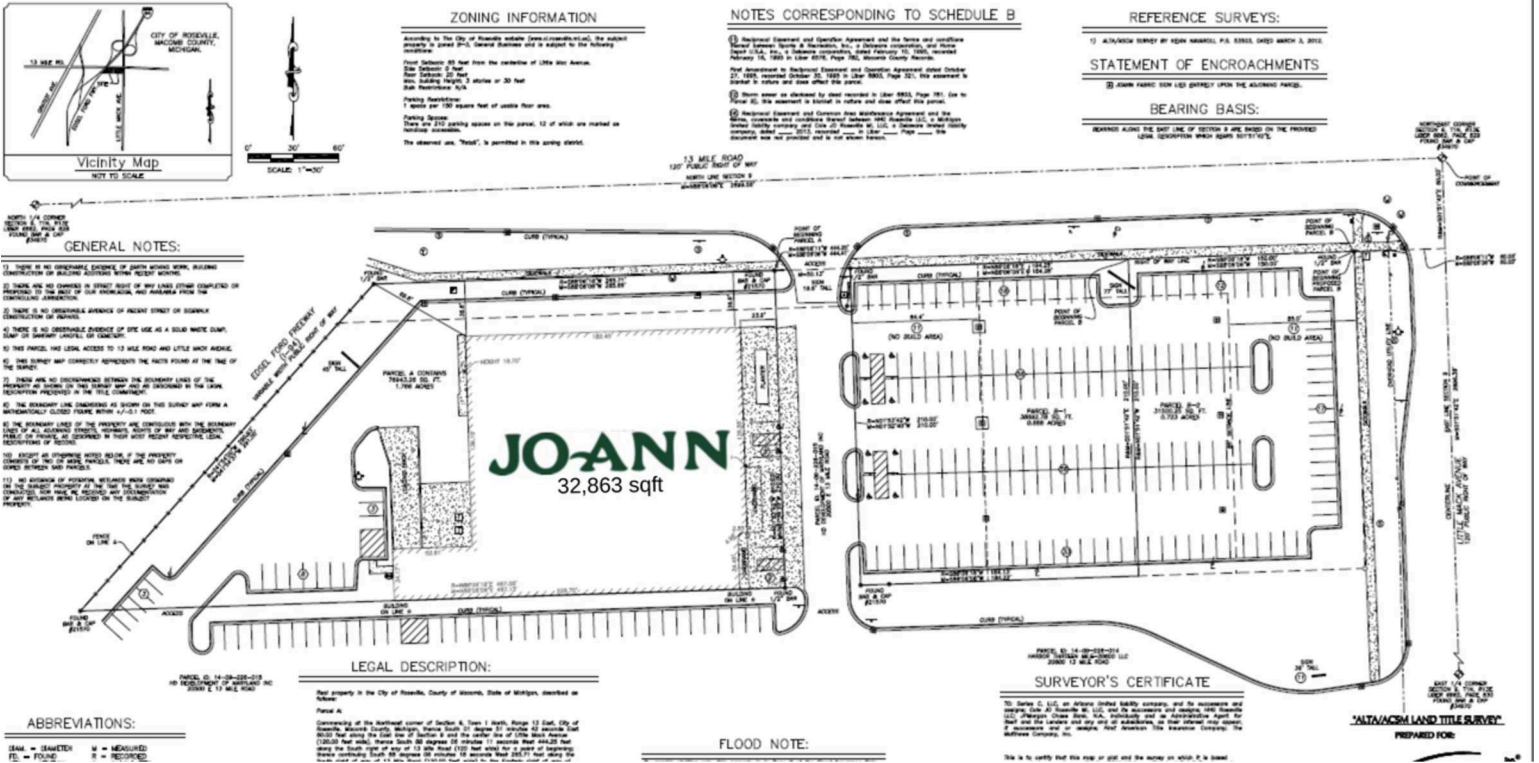
Demographics***	1-Mile	3-Mile	5-Mile
2020 Est Population	11,349	113,309	271,817
2020 Est Daytime Population	8,705	42,347	89,273
2020 Est Households	4,882	47,359	115,191
2020 Est Avg Household Income	60,711	62,451	64,242
2020 Est Med Household Income	50,273	50,768	51,625

*Approximate. **Texas DOT ***Source: Claritas 2020



4700 Wilshire Boulevard, Los Angeles, CA 90010 | www.cimgroup.com

Jo-Ann Stores MI-Roseville



A Jo-Ann's

32,863 SF

Not to scale. Owned by Cole Credit Property Trust IV, Inc., sponsored by CCO Group, LLC (CCO Group), a subsidiary of CIM Group* (CIM*). Corporate tenants may also occupy numerous properties that are not owned by CIM. CCO Group and CIM are not affiliated with, associated with, or a sponsor of any of the tenants pictured or mentioned. The names, logos and all related product and service names, design marks and slogans are the trademarks or service marks of their respective companies.



4700 Wilshire Boulevard, Los Angeles, CA 90010 | www.cimgroup.com