

Logan's Roadhouse TX-Lancaster

700 North I-35 East | Lancaster, TX 75146

CIM



Highlights

Type: Restaurant
Total SF: 6,555
Parking Spaces: 128
Year Built: 2011

Property Highlights

Contact

Dan Shovelin
214 252 1186
Dan.Shovelin@cbre.com

Jeff Kittleson

Jeff.Kittleson@cbre.com

Retailers Include



Demographics***

	1-Mile	3-Mile	5-Mile
2020 Est Population	7,559	71,662	150,674
2020 Est Daytime Population	4,460	20,335	40,725
2020 Est Households	2,908	25,026	51,182
2020 Est Avg Household Income	64,775	67,297	69,885
2020 Est Med Household Income	53,971	54,361	54,716

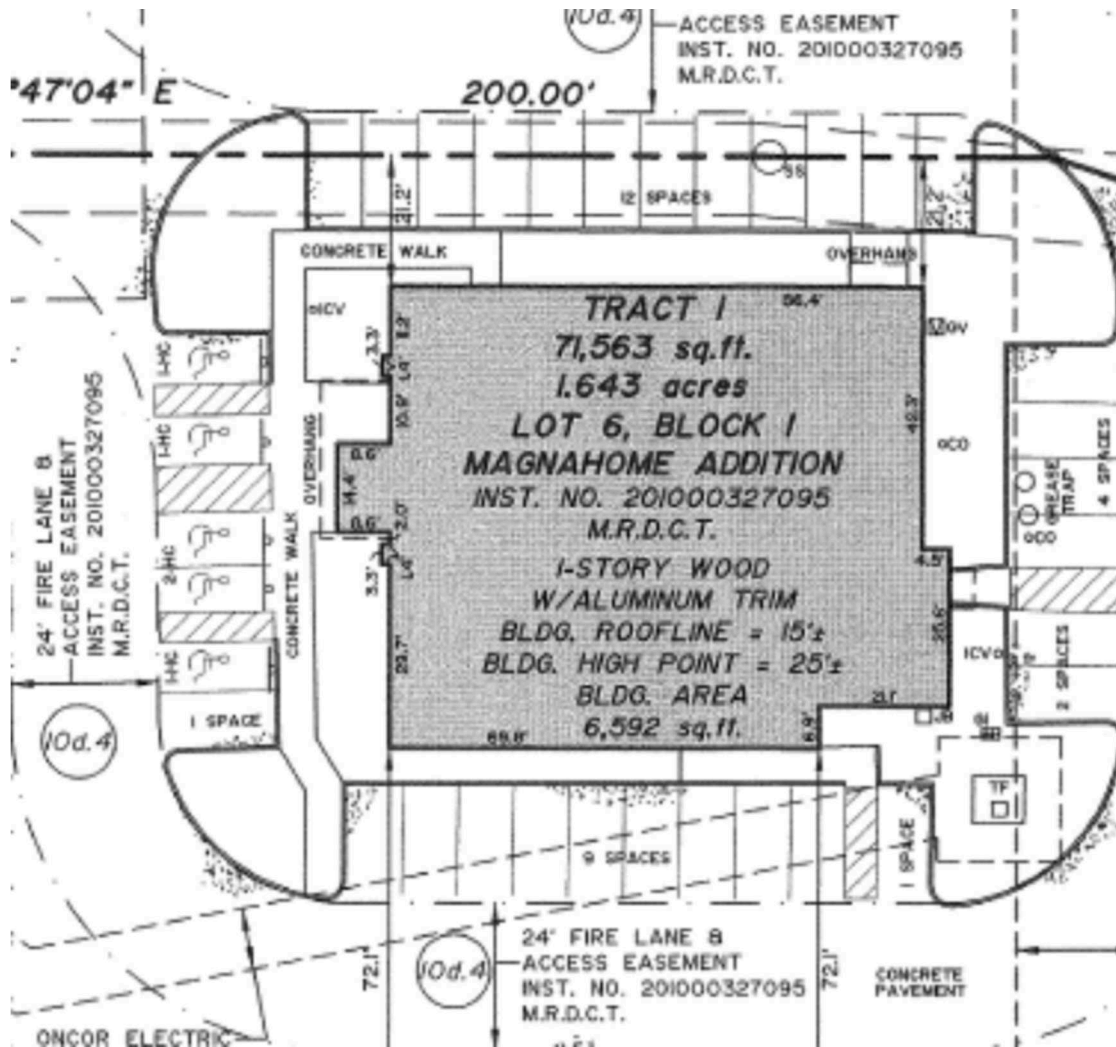
*Approximate. **Texas DOT ***Source: Claritas 2020

CIM

4700 Wilshire Boulevard, Los Angeles, CA 90010 | www.cimgroup.com

Powered by Property Capsule

Logan's Roadhouse TX-Lancaster



A Logan's Roadhouse

6,555 SF

Not to scale. Owned by Cole Credit Property Trust IV, Inc., sponsored by CCO Group, LLC (CCO Group), a subsidiary of CIM Group* (CIM*). Corporate tenants may also occupy numerous properties that are not owned by CIM. CCO Group and CIM are not affiliated with, associated with, or a sponsor of any of the tenants pictured or mentioned. The names, logos and all related product and service names, design marks and slogans are the trademarks or service marks of their respective companies.



4700 Wilshire Boulevard, Los Angeles, CA 90010 | www.cimgroup.com