

Dollar General MI-Lexington

6908 Lakeshore Road | Lexington, MI 48624



Highlights

Type: Freestanding Retail
Total SF: 9,100
Parking Spaces: 46
Year Built: 2013

Property Highlights

Retailers Include



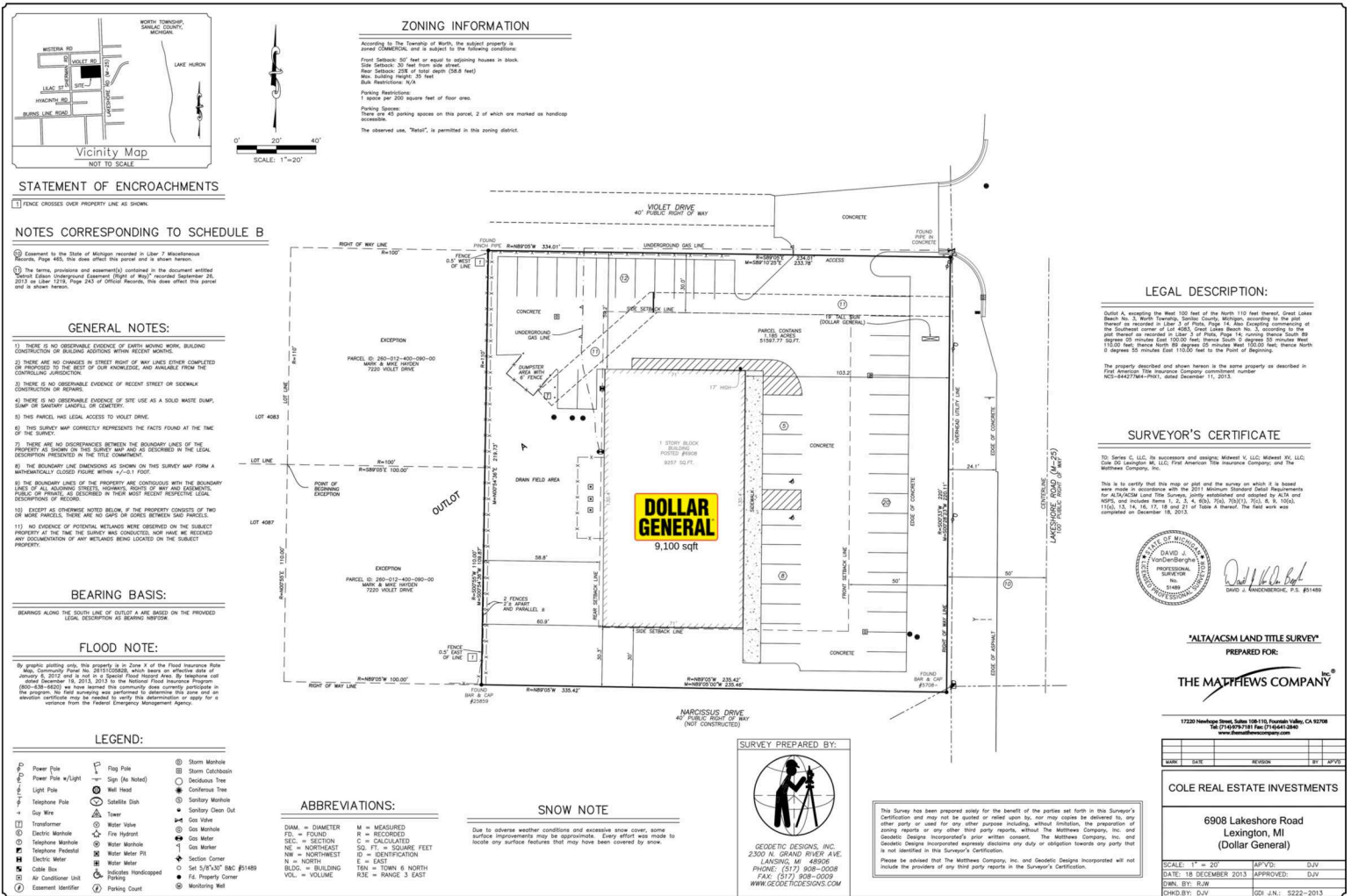
Demographics***	1-Mile	3-Mile	5-Mile
2020 Est Population	814	3,285	5,658
2020 Est Daytime Population	1,167	3,275	5,161
2020 Est Households	410	1,500	2,489
2020 Est Avg Household Income	64,488	66,304	66,580
2020 Est Med Household Income	50,284	51,159	50,184

*Approximate. **Texas DOT ***Source: Claritas 2020



4700 Wilshire Boulevard, Los Angeles, CA 90010 | www.cimgroup.com

Dollar General MI-Lexington



A Dollar General

9,100 SF



4700 Wilshire Boulevard, Los Angeles, CA 90010 | www.cimgroup.com