

# Dollar General MN-Starbuck

605 E 7th Street | Starbuck, MN 56381



## Highlights

Type: Freestanding Retail

Total SF: 9,100

Parking Spaces: 36

Year Built: 2016

## Contact

Jennifer Daniels

602.778.6429

JDaniels@cimgroup.com

## Property Highlights

### Retailers Include



### Demographics\*\*\*

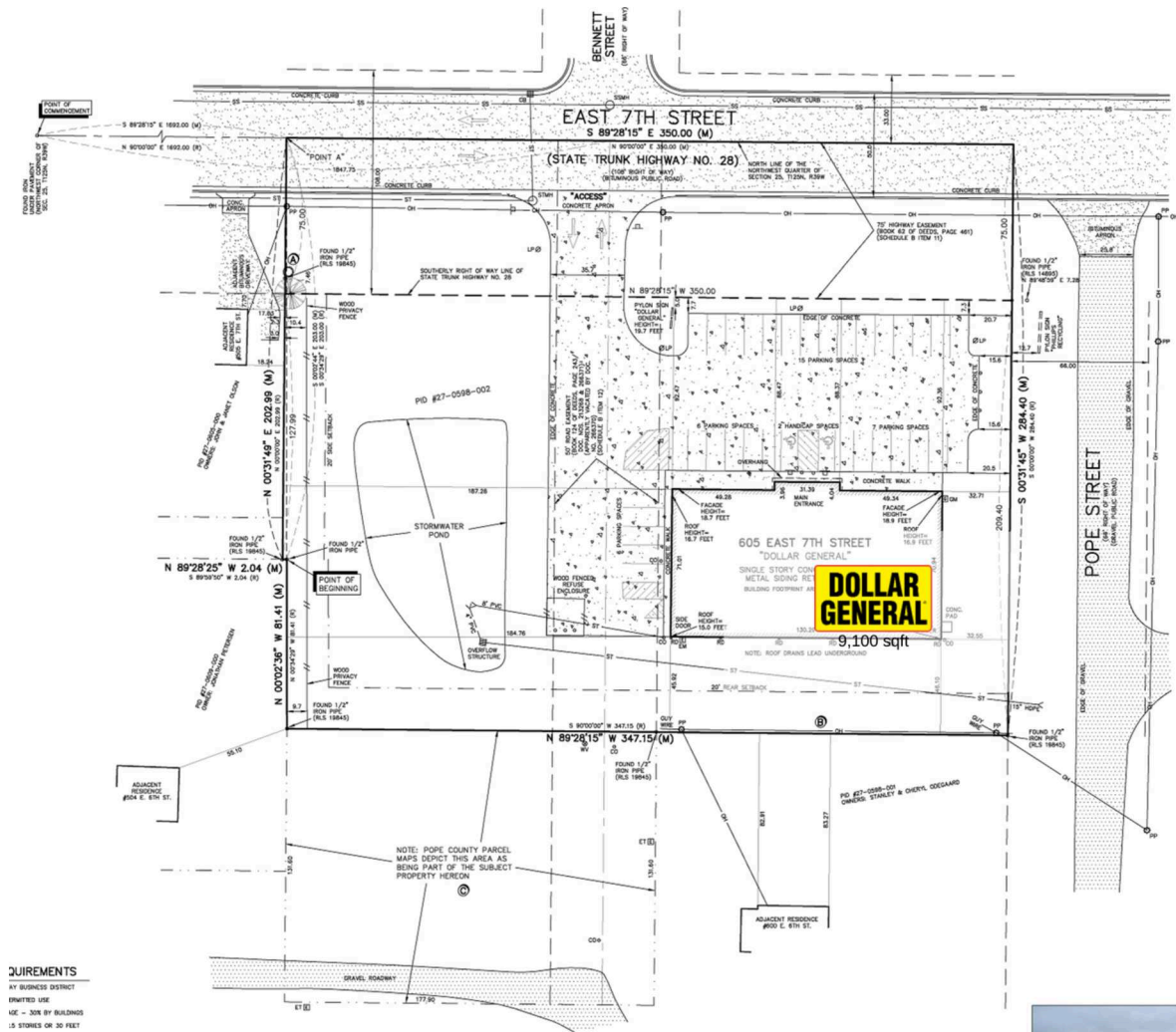
|                               | 1-Mile | 3-Mile | 5-Mile |
|-------------------------------|--------|--------|--------|
| 2020 Est Population           | 1,484  | 2,032  | 2,776  |
| 2020 Est Daytime Population   | 726    | 813    | 948    |
| 2020 Est Households           | 657    | 893    | 1,214  |
| 2020 Est Avg Household Income | 63,626 | 67,577 | 72,976 |
| 2020 Est Med Household Income | 46,217 | 49,152 | 53,208 |

\*Approximate. \*\*Texas DOT \*\*\*Source: Claritas 2020



4700 Wilshire Boulevard, Los Angeles, CA 90010 | [www.cimgroup.com](http://www.cimgroup.com)

# Dollar General MN-Starbucks



A Dollar General

9,100 SF

Not to scale. Owned by Cole Credit Property Trust IV, Inc., sponsored by CCO Group, LLC (CCO Group), a subsidiary of CIM Group\* (CIM\*). Corporate tenants may also occupy numerous properties that are not owned by CIM. CCO Group and CIM are not affiliated with, associated with, or a sponsor of any of the tenants pictured or mentioned. The names, logos and all related product and service names, design marks and slogans are the trademarks or service marks of their respective companies.



4700 Wilshire Boulevard, Los Angeles, CA 90010 | [www.cimgroup.com](http://www.cimgroup.com)