

CVS WI-Wisconsin Rapids

2410 S. 8th Street | Wisconsin Rapids, WI 54494



Highlights

Type: Retail
Total SF: 13,307
Parking Spaces: 66
Year Built: 2013

Property Highlights

Retailers Include



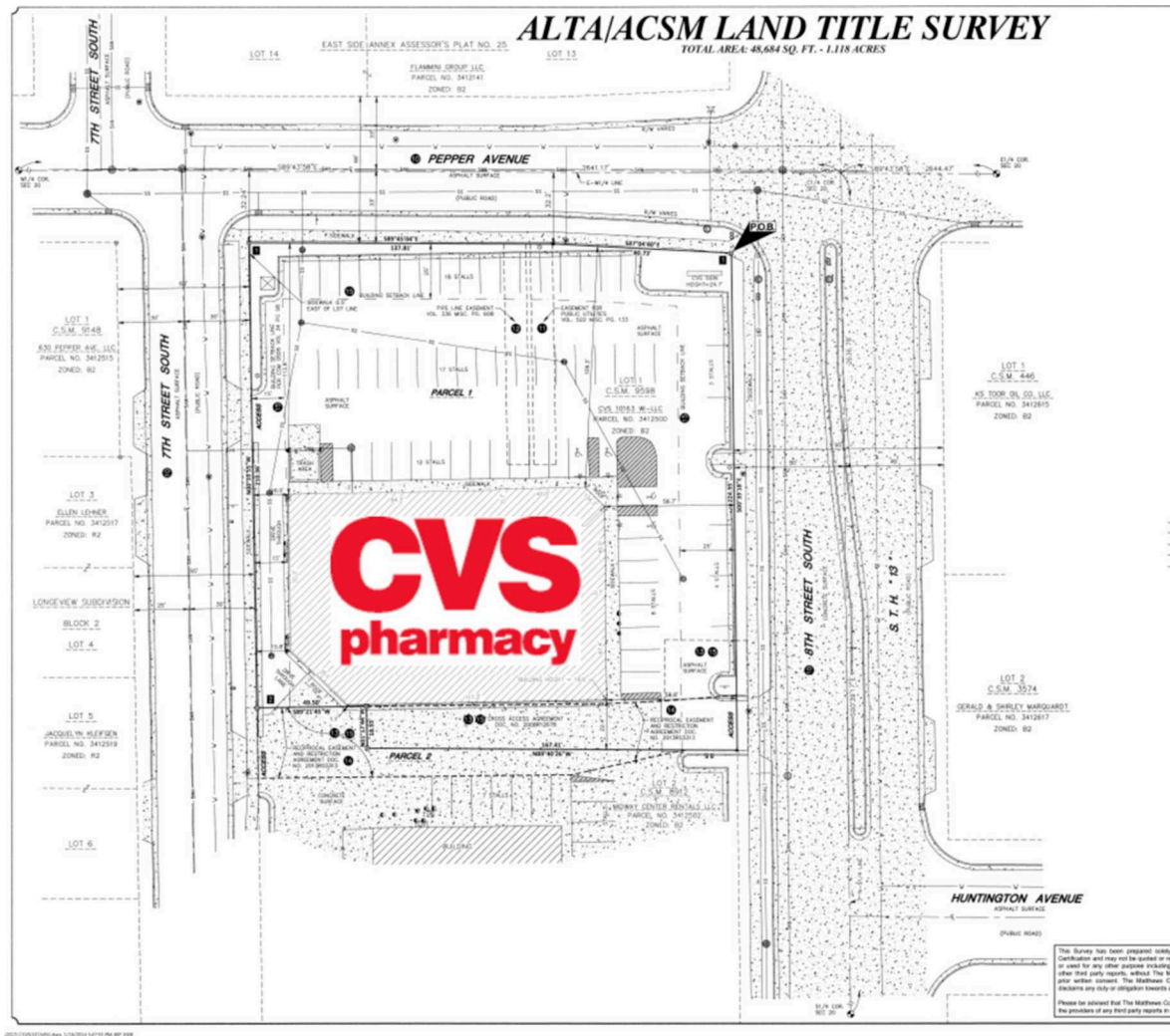
Demographics***	1-Mile	3-Mile	5-Mile
2025 Est Population	6,902	23,931	32,672
2025 Est Daytime Population	8,480	27,017	33,044
2025 Est Households	3,245	10,642	14,211
2025 Est Avg Household Income	60,444	60,702	64,170
2025 Est Med Household Income	46,570	46,569	50,762

*Approximate. **Texas DOT ***Source: Claritas 2025



CVS WI-Wisconsin Rapids

CIM



A CVS Pharmacy

13,307 SF

Not to scale. CIM is not affiliated with, associated with, or a sponsor of any of the tenants pictured or mentioned. The names, logos and all related product and service names, design marks and slogans are the trademarks or service marks of their respective companies.

CIM

4700 Wilshire Boulevard, Los Angeles, CA 90010 | www.cimgroup.com

Powered by Property Capsule