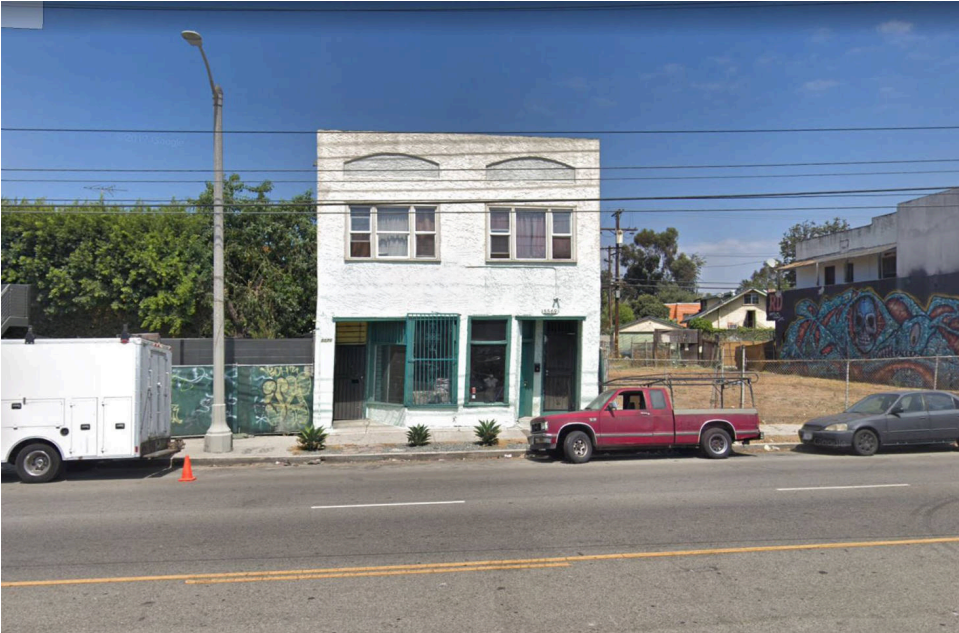


5569 W. Adams Blvd

5569 W Adams Boulevard | Los Angeles, CA 90016

CIM



Highlights

Type: Retail

Total SF: 2,160

Year Built: 1926

Property Highlights

Adams Blvd is a transformative multibuilding mixed use development spanning 3.5 miles between La Cienega and Crenshaw Blvd. in central Los Angeles. The project features retail, office, hotel and residential components. The underserved retail market of Adams Blvd. will be brought to life with a curated blend of amenities in the restaurant, service, entertainment, grocery, and fitness categories. Located, south of the 10 Freeway between Jefferson Park and Culver City, Historic West Adams is one of LA's oldest neighborhoods home to cultural history and architectural significance. The community's central proximity and inherent charm has driven restoration and established itself as one of the most competitive residential real estate markets in the country. The Adams Blvd. renaissance has begun and now is the time to join the movement.

*Approximate. **Texas DOT ***Source: Claritas 2025

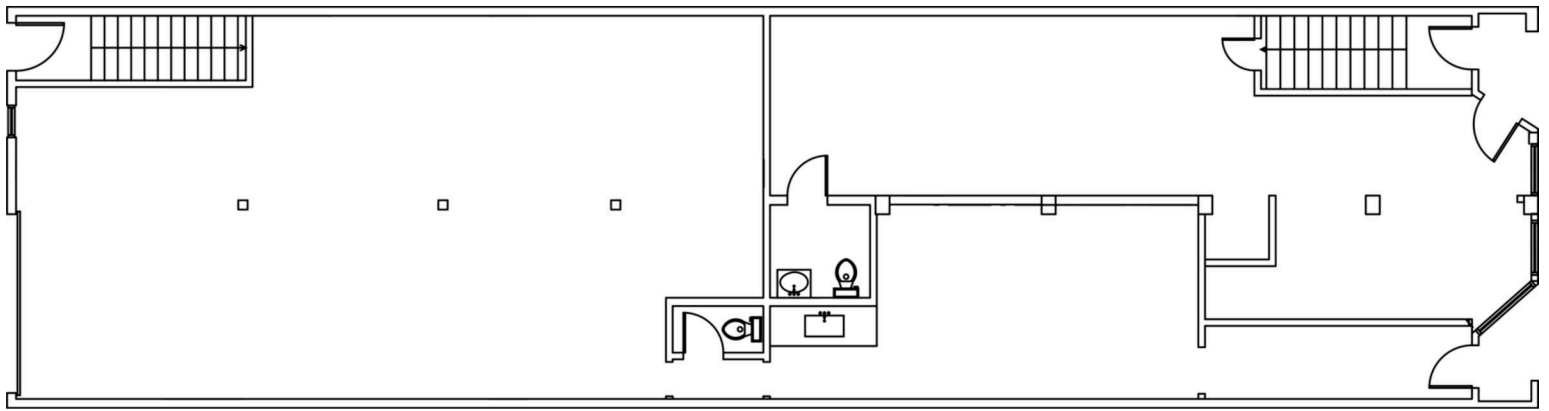
CIM

4700 Wilshire Boulevard, Los Angeles, CA 90010 | www.cimgroup.com

Powered by Property Capsule

5569 W. Adams Blvd

CIM



GRND Available

2,085 SF

Not to scale. CIM is not affiliated with, associated with, or a sponsor of any of the tenants pictured or mentioned. The names, logos and all related product and service names, design marks and slogans are the trademarks or service marks of their respective companies.

CIM

4700 Wilshire Boulevard, Los Angeles, CA 90010 | www.cimgroup.com

Powered by Property Capsule