

Dollar General MI-Lansing

3520 S. Waverly Rd. | Lansing, MI 48911



Highlights

Type: Freestanding Retail
Total SF: 9,026
Parking Spaces: 41
Year Built: 2014

Contact

Jennifer Daniels
602.778.6429
JDaniels@cimgroup.com

Property Highlights

Retailers Include



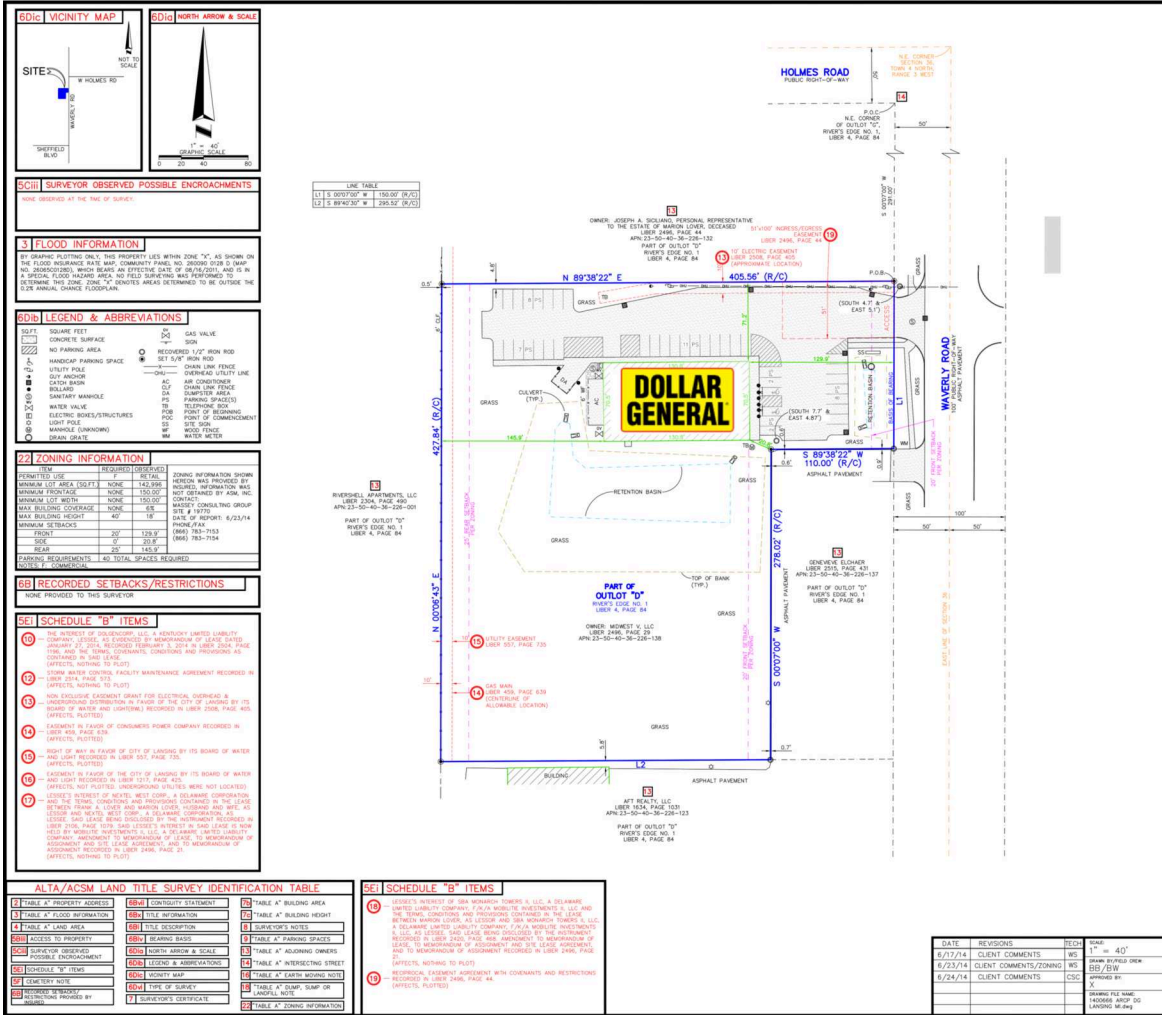
Demographics***	1-Mile	3-Mile	5-Mile
2020 Est Population	12,216	63,505	151,262
2020 Est Daytime Population	842	33,626	128,411
2020 Est Households	4,870	26,829	64,944
2020 Est Avg Household Income	53,350	56,081	58,767
2020 Est Med Household Income	43,857	44,195	45,155

*Approximate. **Texas DOT ***Source: Claritas 2020



4700 Wilshire Boulevard, Los Angeles, CA 90010 | www.cimgroup.com

Dollar General MI-Lansing



SHEET 1 OF 1

6B TITLE INFORMATION

6C TITLE DESCRIPTION

6D SURVEYOR'S NOTES

6E LAND AREA

6F BEARING BASIS

6G CEMETERY NOTE

6H PARKING SPACES

6I ACCESS TO PROPERTY

6J EARTH MOVING NOTE

6K DUMP, SUMP OR LANDFILL NOTE

6L CONTIGUITY STATEMENT

6M SURVEYOR'S CERTIFICATE

6N ALTA/ACSM LAND TITLE SURVEY IDENTIFICATION TABLE

SEI SCHEDULE "B" ITEMS

DATE REVISIONS

DATE	REVISIONS	BY	CHKD
8/17/14	CLIENT COMMENTS	MS	MS
8/23/14	CLIENT COMMENTS/REVISED	MS	MS
8/24/14	CLIENT COMMENTS	CSG	CSG

A Dollar General

9,026 SF

Not to scale. Owned by Cole Credit Property Trust IV, Inc., sponsored by CCO Group, LLC (CCO Group), a subsidiary of CIM Group* (CIM*). Corporate tenants may also occupy numerous properties that are not owned by CIM. CCO Group and CIM are not affiliated with, associated with, or a sponsor of any of the tenants pictured or mentioned. The names, logos and all related product and service names, design marks and slogans are the trademarks or service marks of their respective companies.



4700 Wilshire Boulevard, Los Angeles, CA 90010 | www.cimgroup.com