

5 HANOVER SQUARE



SPACE DETAILS

LOCATION

On Pearl Street, between Hanover Street and William Street

APPROXIMATE SIZE

Ground Floor	1,902 SF
Lower Level	600 SF
Total	2,502 SF

CEILING HEIGHT

Ground Floor	10 FT
--------------	-------

FRONTAGE

34 FT on Pearl Street

TERM

Long-term

POSSESSION

May 1, 2019

SITE STATUS

Currently H&R Block

NEIGHBORS

Little Beet (coming soon), Bluestone Lane, Starbucks, Cava Grill, Proper Food, Joe & The Juice, Delmonico's, Indochino, My Suit, La Colombe Coffee Roasters, Sweetgreen, Cipriani, Le Labo, Thomas Pink, Al Horno, Tumi, and Lenwich

COMMENTS

At the base of a 25-story, 338,000-SF office tower in the heart of downtown Manhattan

Steps from the **2 3 4 5 J Z** subway lines, servicing more than 15,000,000 riders annually

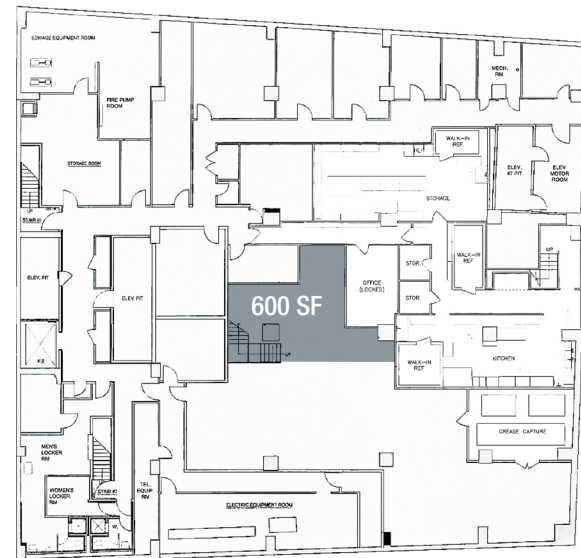
The average household income in Lower Manhattan is \$224,000

Over 2,262 new residential units coming to the area over the next three years

GROUND FLOOR



LOWER LEVEL



AREA RETAIL



+ COMING SOON

CONTACT EXCLUSIVE AGENTS

ROSS KAPLAN
212.850.5418
rkaplan@ngkf.com

DEREK KOELSCH
212.372.0740
derek.koelsch@ngkf.com



125 PARK AVENUE, NEW YORK, NY 10017
212.372.2000 INQUIRIES@NGKF.COM NGKF.COM

© 2018 NEWMARK KNIGHT FRANK RETAIL. The information contained herein has been obtained from sources deemed reliable but has not been verified and no guarantee, warranty or representation, either express or implied, is made with respect to such information. Terms of sale or lease and availability are subject to change or withdrawal without notice.