

CORNER LOCATION



*On Pearl Street
Between Hanover + William Streets*

At the base of a 25-story, 338,000 SF office tower in the heart of
DOWNTOWN MANHATTAN

Steps from the 2, 3, 4, 5, J, Z subway lines, servicing more than **15,000,000** riders annually

Actual Size

SIZE

3,550 SF - Ground Floor
2,470 SF - Lower Level

FRONTAGE

105' Wrapparound

Proposed Divisions

SPACE A SIZE

2,290 SF - Ground Floor
2,470 SF - Lower Level

FRONTAGE

50' on Hanover Street
30' on Pearl Street

SPACE B SIZE

1,260 SF - Ground Floor

FRONTAGE

25' on Beaver Street

**FOR MORE INFORMATION,
PLEASE CONTACT OUR EXCLUSIVE BROKERS:**

Ross Kaplan
Executive Managing Director
212.850.5418
rkaplan@ngkf.com

Derek Koelsch
Associate
212.372.0740
derek.koelsch@ngkf.com

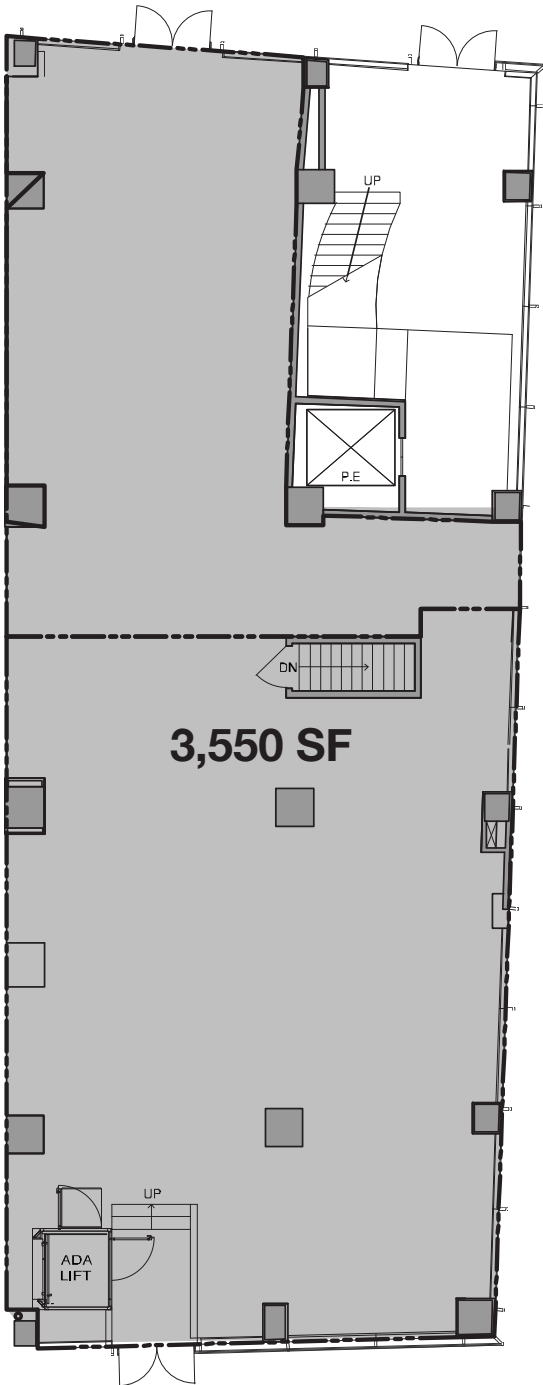
**Newmark
Knight Frank**

www.ngkf.com/retail

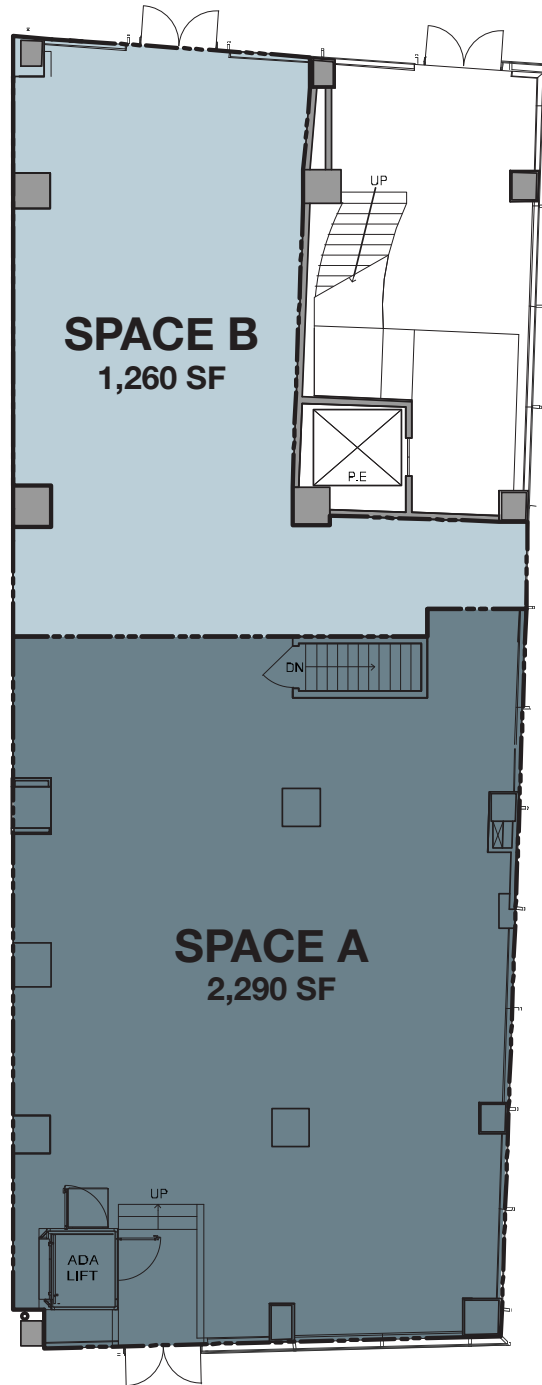


ALL USES CONSIDERED

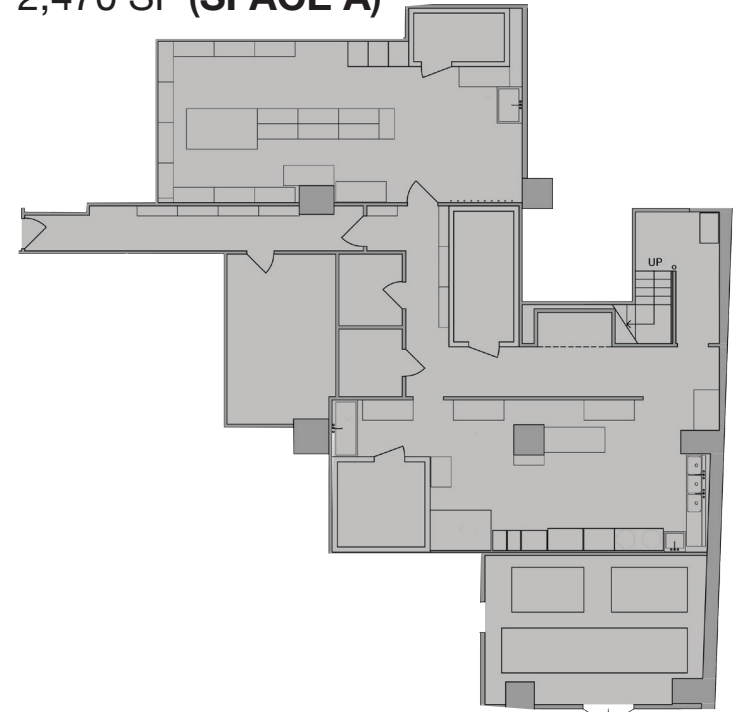
**ACTUAL SIZE
GROUND FLOOR**



**PROPOSED DIVISIONS
GROUND FLOOR**



**LOWER LEVEL
2,470 SF (SPACE A)**





FOR MORE INFORMATION, PLEASE CONTACT OUR EXCLUSIVE BROKER:

Ross Kaplan
Executive Managing Director
 212.850.5418
 rkaplan@ngkf.com

Derek Koelsch
Associate
 212.372.0740
 derek.koelsch@ngkf.com

**Newmark
 Knight Frank**
www.ngkf.com/retail



The information contained herein has been obtained from sources deemed reliable but has not been verified and no guarantee, warranty or representation, either express or implied, is made with respect to such information. Terms of sale or lease and availability are subject to change or withdrawal without notice.