

MATTRESS FIRM

501 Grand Central Ave, Vienna, WV 26105



LOCATION OVERVIEW

Prime location in front of Grand Central Mall.



PROPERTY HIGHLIGHTS

- Available 6,716 SF
- Join Aspen Dental
- Endcap with top pylon panel sign opportunity
- Grand Central Mall, a 908,238 SF regional mall
- High visibility along Grand Central Avenue
- Easy access at lighted intersection
- Area retailers include: JCPenney, Belk, The Home Depot, TJ Maxx, Regal Cinemas
- Grand Central Ave: 29,000 AADT

DEMOGRAPHICS

| | 1 MILE | 3 MILES | 5 MILES |
|------------------------|--------|---------|---------|
| Population | 4,676 | 39,969 | 58,762 |
| Households | 2,185 | 17,736 | 25,704 |
| Average HH Income (\$) | 49,501 | 55,195 | 55,155 |

EXCLUSIVE AGENT(S)

DAVID ANDREWS, CCIM • david.andrews@tscg.com • 804.673.1100

LORETTA CATALDI • loretta.cataldi@tscg.com • 804.673.1100

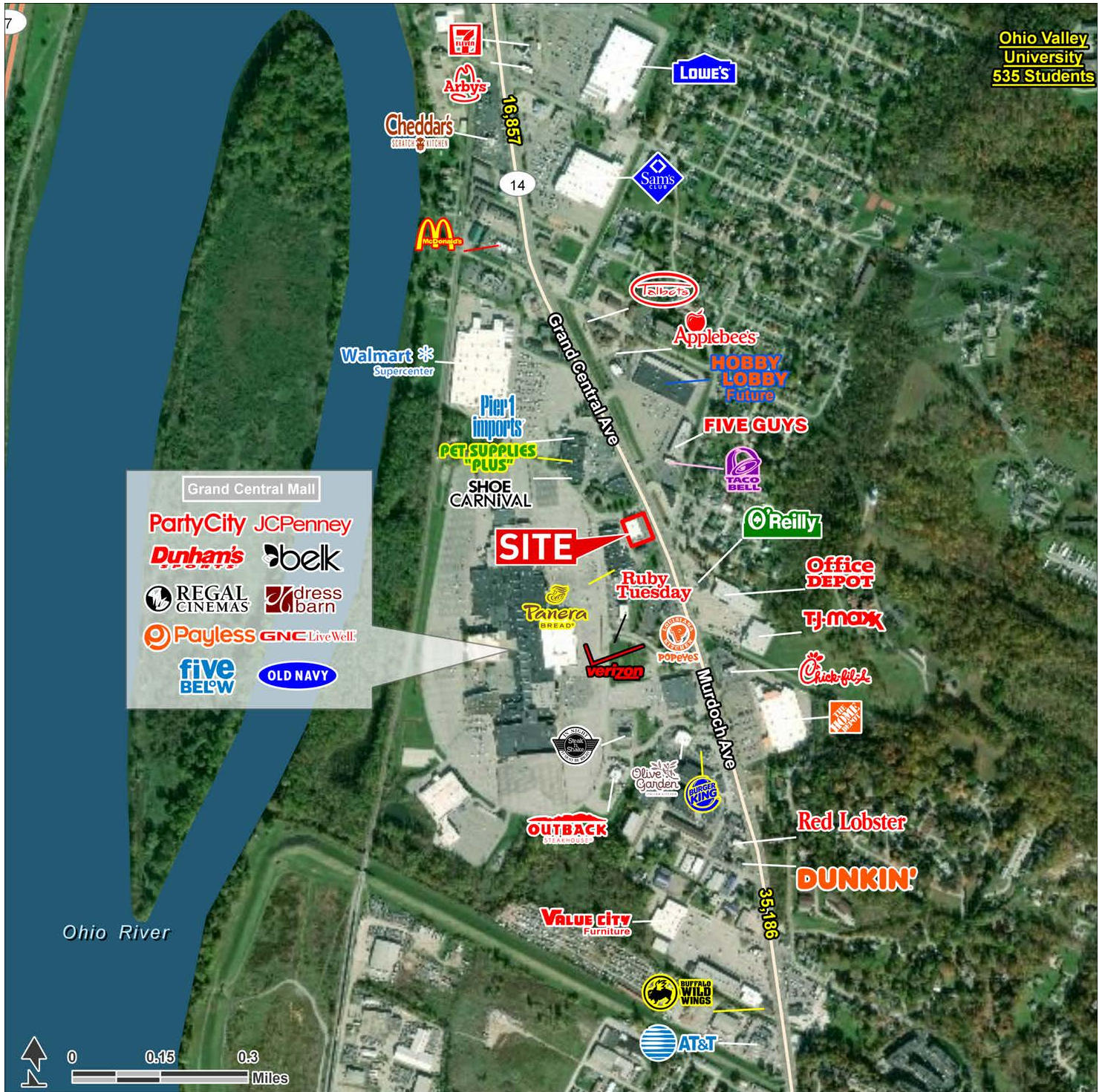
Operated and Managed by:

CIM



MATTRESS FIRM

501 Grand Central Ave, Vienna, WV 26105



EXCLUSIVE AGENT(S)

DAVID ANDREWS, CCIM • david.andrews@tscg.com • 804.673.1100

LORETTA CATALDI • loretta.cataldi@tscg.com • 804.673.1100

Operated and Managed by:

CIM

TSCG